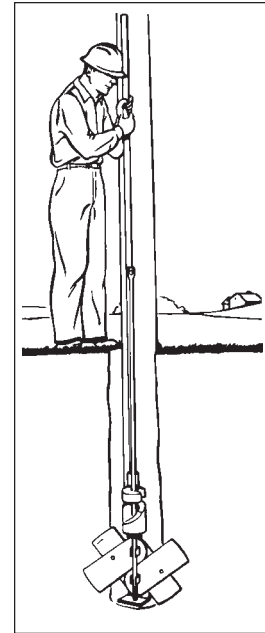


APPLICATION/INSTALLATION EXPANDING POLE KEY ANCHOR

ANCHOR APPLICATIONS	For reinforcing poles at the ground line where load is unbalanced in soft soils or in areas subjected to constant high winds.
INSTALL IN THESE CLASS SOILS	Classes 3, 4, 5 and 6 (200-600 inch-pound with soil test probe)
INSTALLING EQUIPMENT REQUIRED	Extra anchor rod, expanding bar and shovel. (See page B-33)
LIMITATIONS ON USE	Will not take the place of guying on a heavily-loaded structure.

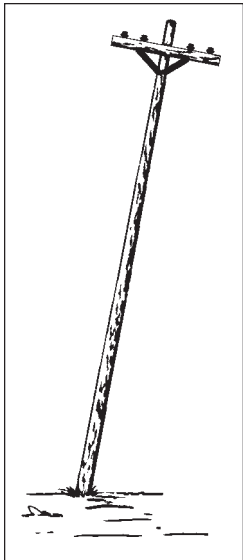
STEP #2



Attach anchor to rod. Lower anchor assembly into pole hole (beside the butt of pole) and bust anchor open with the Expanding/Tamping bar.

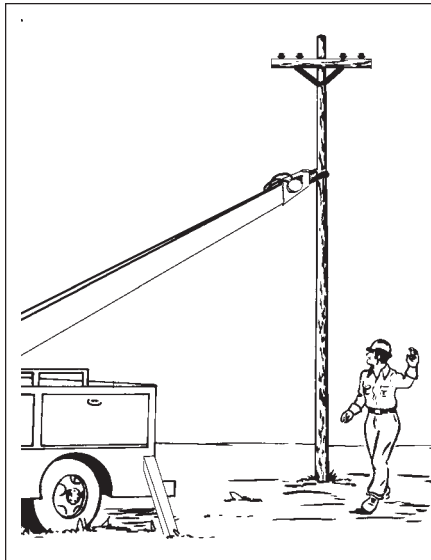
INSTALLATION GUIDE:

STEP #1

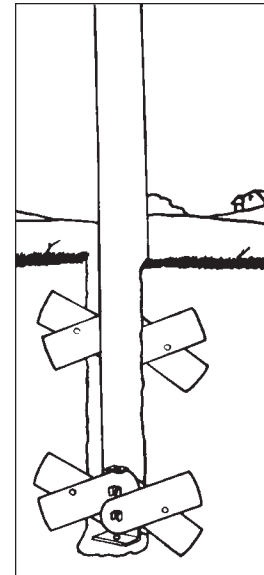


Straighten the pole.

STEP #3



Remove rod from anchor and hole. Backfill and tamp hole.



NOTE: If desired, a second pole key anchor may be used at the top (ground level) of the hole on the opposite side of the pole.