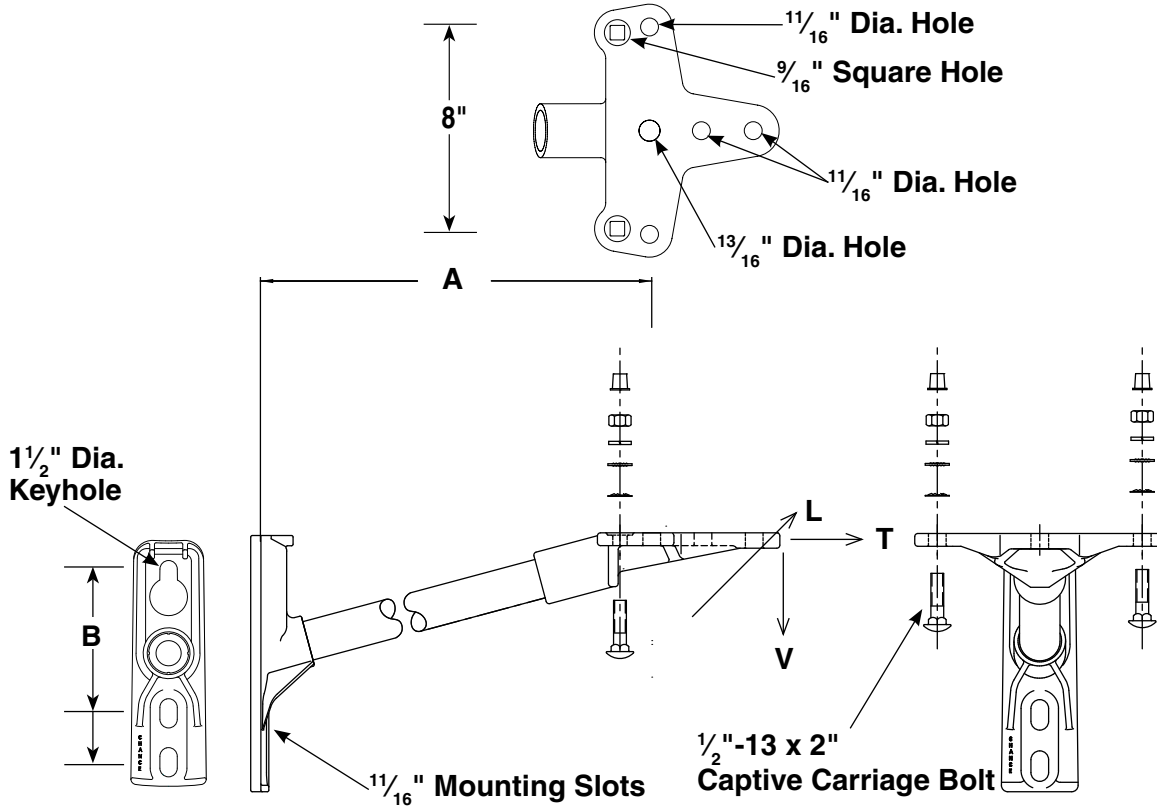


# 15° 7-Hole Cloverleaf Single-Phase Cutout/Arrester Bracket

SUPPLEMENTAL CATALOG  
BULLETIN 12-41.7  
AUGUST 2010

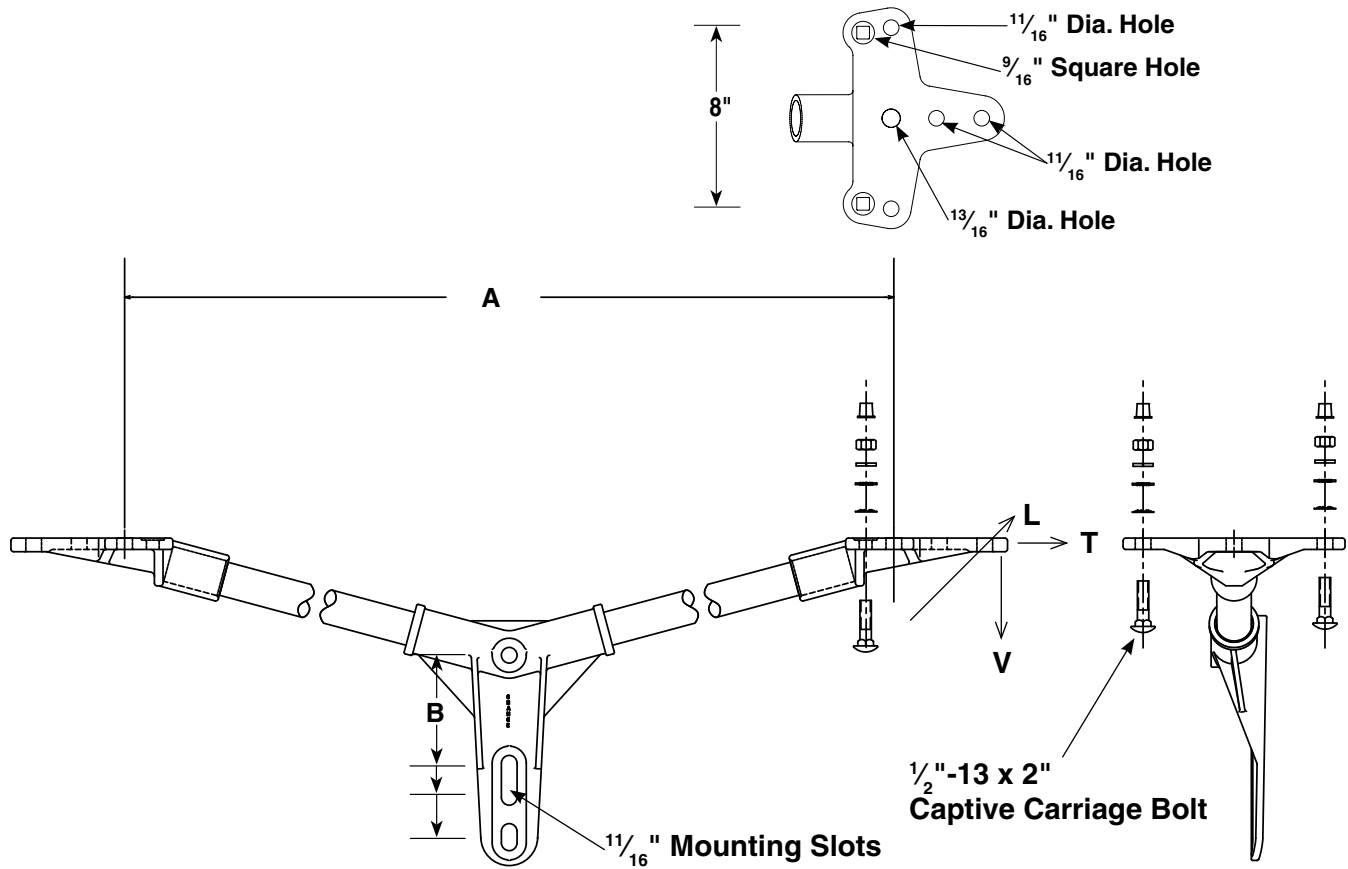


- Base design permits bolting or banding to structure.
- Base is hot-dip galvanized ductile iron.
- **B** Dimension is 6" & 8"
- End fitting is aluminum alloy.

Catalog Number	Length A	Minimum Ultimate*			Weight (Each)
		Vertical V	Longitudinal L	Transverse T	
<b>Medium Duty 1.5" (38 mm) Dia. Rod</b>					
<b>Standoff Bracket only</b>					
1SBM12DFCL	12" (30.5 cm)	1800 lbs. (816 kg)	1400 lbs. (635 kg)	10,000 lbs. (4536 kg)	6.9 lbs. (3.1 kg)
1SBM15DFCL	15" (38.1 cm)	1500 lbs. (680 kg)	1100 lbs. (499 kg)	10,000 lbs. (4536 kg)	7.3 lbs. (3.3 kg)
1SBM18DFCL	18" (45.7 cm)	1200 lbs. (544 kg)	950 lbs. (431 kg)	10,000 lbs. (4536 kg)	7.7 lbs. (3.5 kg)
1SBM21DFCL	21" (53.3 cm)	1050 lbs. (476 kg)	825 lbs. (374 kg)	10,000 lbs. (4536 kg)	8.1 lbs. (3.7 kg)
1SBM24DFCL	24" (61 cm)	900 lbs. (408 kg)	700 lbs. (318 kg)	10,000 lbs. (4536 kg)	8.5 lbs. (3.9 kg)
<b>Bracket with Hardware</b>					
1SBM12DFCLH	12" (30.5 cm)	1800 lbs. (816 kg)	1400 lbs. (635 kg)	10,000 lbs. (4536 kg)	7.0 lbs. (3.1 kg)
1SBM15DFCLH	15" (38.1 cm)	1500 lbs. (680 kg)	1100 lbs. (499kg)	10,000 lbs. (4536 kg)	7.4 lbs. (3.4 kg)
1SBM18DFCLH	18" (45.7 cm)	1200 lbs. (544 kg)	950 lbs. (431 kg)	10,000 lbs. (4536 kg)	7.8 lbs. (3.5 kg)
1SBM21DFCLH	21" (53.3 cm)	1050 lbs. (476 kg)	825 lbs. (374 kg)	10,000 lbs. (4536 kg)	8.2 lbs. (3.7 kg)
1SBM24DFCLH	24" (61 cm)	900 lbs. (408 kg)	700 lbs. (318 kg)	10,000 lbs. (4536 kg)	8.6 lbs. (3.9 kg)

\*Recommended maximum working load is 50% of minimum ultimate ratings listed.  
Consult factory for additional lengths.

# 15° 7-Hole Cloverleaf Two-Phase Cutout/Arrester Bracket



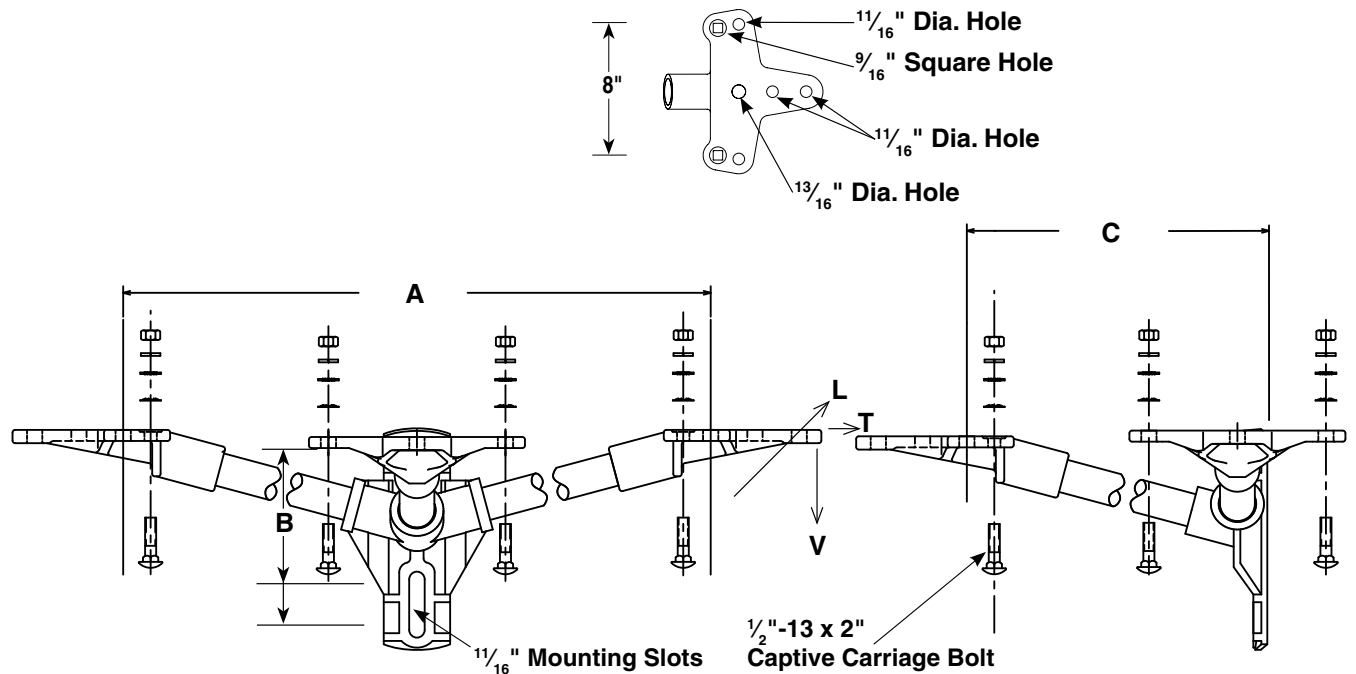
- Base is hot-dip galvanized ductile iron.
- End fitting is aluminum alloy.
- **B** Dimension is 5", 6" & 8"

Catalog Number	Length A	Minimum Ultimate*			Weight (Each)
		Vertical V	Longitudinal L	Transverse T	
<b>Medium Duty 1.5" (38 mm) Dia. Rod</b>					
<b>Standoff Bracket only</b>					
2SBM24DFCL	24" (61 cm)	1500 lbs. (680 kg)	1100 lbs. (499 kg)	10,000 lbs. (4536 kg)	12.4 lbs. (5.6 kg)
2SBM36DFCL	36" (91.4 cm)	1200 lbs. (544 kg)	900 lbs. (408 kg)	10,000 lbs. (4536 kg)	14.0 lbs. (6.4 kg)
2SBM42DFCL	42" (106.7 cm)	950 lbs. (431 kg)	700 lbs. (318 kg)	10,000 lbs. (4536 kg)	14.8 lbs. (6.7 kg)
2SBM48DFCL	48" (121.9 cm)	900 lbs. (408 kg)	500 lbs. (227 kg)	10,000 lbs. (4536 kg)	15.6 lbs. (7.1 kg)
<b>Bracket with Hardware</b>					
2SBM24DFCLH	24" (61 cm)	1500 lbs. (680 kg)	1100 lbs. (499 kg)	10,000 lbs. (4536 kg)	12.5 lbs. (5.7 kg)
2SBM36DFCLH	36" (91.4 cm)	1200 lbs. (544 kg)	900 lbs. (408 kg)	10,000 lbs. (4536 kg)	14.1 lbs. (6.4 kg)
2SBM42DFCLH	42" (106.7 cm)	950 lbs. (431 kg)	700 lbs. (318 kg)	10,000 lbs. (4536 kg)	14.9 lbs. (6.8 kg)
2SBM48DFCLH	48" (121.9 cm)	900 lbs. (408 kg)	500 lbs. (227 kg)	10,000 lbs. (4536 kg)	15.7 lbs. (7.1 kg)

\*Recommended maximum working load is 50% of minimum ultimate ratings listed.  
Consult factory for additional lengths.

# 15° 7-Hole Cloverleaf Three-Phase Cutout/Arrester Bracket

SUPPLEMENTAL CATALOG  
BULLETIN 12-41.9  
AUGUST 2010



- Base design permits bolting or banding to structure.
- Base is aluminum alloy.
- **B** Dimension is 6" & 8"
- End fitting is aluminum alloy.

Catalog Number	Length A	Length C	Minimum Ultimate*			Weight (Each)
			Vertical V	Longitudinal L	Transverse T	
<b>Medium Duty 1.5" (38 mm) Dia. Rod</b>						
<b>Standoff Bracket only</b>						
3SBM3613DFCL	36" (91.4 cm)	13" (33 cm)	1200 lbs. (544 kg)	800 lbs. (363 kg)	10,000 lbs. (4536 kg)	15 lbs. (6.8 kg)
3SBM3618DFCL	36" (91.4 cm)	18" (45.7 cm)	1200 lbs. (544 kg)	800 lbs. (363 kg)	10,000 lbs. (4536 kg)	15.6 lbs. (7.1 kg)
3SBM4813DFCL	48" (121.9 cm)	13" (33 cm)	900 lbs. (408 kg)	800 lbs. (363 kg)	10,000 lbs. (4536 kg)	16.6 lbs. (7.5 kg)
3SBM4818DFCL	48" (121.9 cm)	18" (45.7 cm)	900 lbs. (408 kg)	800 lbs. (363 kg)	10,000 lbs. (4536 kg)	17.2 lbs. (7.8 kg)
3SBM4824DFCL	48" (121.9 cm)	24" (61 cm)	900 lbs. (408 kg)	700 lbs. (318 kg)	10,000 lbs. (4536 kg)	18.1 lbs. (8.2 kg)
<b>Bracket with Hardware</b>						
3SBM3613DFCLH	36" (91.4 cm)	13" (33 cm)	1200 lbs. (544 kg)	800 lbs. (363 kg)	10,000 lbs. (4536 kg)	15.1 lbs. (6.8 kg)
3SBM3618DFCLH	36" (91.4 cm)	18" (45.7 cm)	1200 lbs. (544 kg)	800 lbs. (363 kg)	10,000 lbs. (4536 kg)	15.7 lbs. (7.1 kg)
3SBM4813DFCLH	48" (121.9 cm)	13" (33 cm)	900 lbs. (408 kg)	800 lbs. (363 kg)	10,000 lbs. (4536 kg)	16.7 lbs. (7.6 kg)
3SBM4818DFCLH	48" (121.9 cm)	18" (45.7 cm)	900 lbs. (408 kg)	800 lbs. (363 kg)	10,000 lbs. (4536 kg)	17.3 lbs. (7.8 kg)
3SBM4824DFCLH	48" (121.9 cm)	24" (61 cm)	900 lbs. (408 kg)	700 lbs. (318 kg)	10,000 lbs. (4536 kg)	18.2 lbs. (8.3 kg)

\*Recommended maximum working load is 50% of minimum ultimate ratings listed.  
Consult factory for additional lengths.



**CHANCE**

210 N. Allen St. • Centralia, MO 65240

©Copyright 2010 Hubbell Incorporated

Printed in USA