

ALUMINUM BAND-TYPE CLUSTER MOUNTS

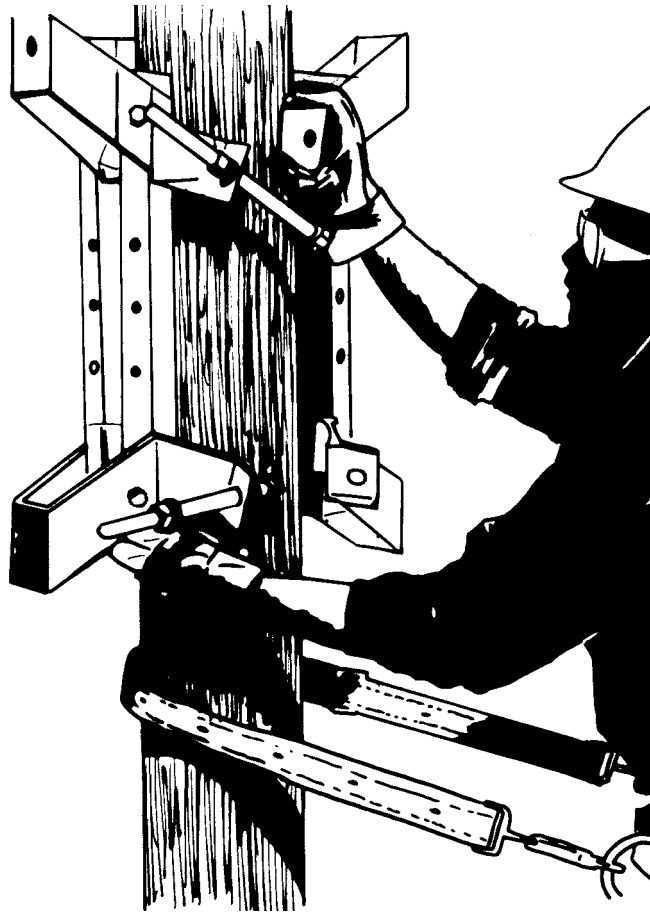
Warranty - Material

Hubbell Power Systems, Inc. warrants all products sold by it to be merchantable (as such term is defined in the Uniform Commercial Code) and to be free from defects in material and workmanship. Buyer must notify the Company promptly of any claim under this warranty. The Buyer's exclusive remedy for breach of this warranty shall be the repair or replacement, F.O.B. factory, at the Company's option, of any product defective under the warranty which is returned to the Company within one year from the date of shipment. NO OTHER WARRANTY, WHETHER EXPRESS OR ARISING BY OPERATION OF LAW, COURSE OF DEALING, USAGE OF TRADE OR OTHERWISE IMPLIED, SHALL EXIST IN CONNECTION WITH THE COMPANY'S PRODUCTS OR ANY SALE OR USE THEREOF. The Company shall in no event be liable for any loss of profits or any consequential or special damages incurred by Buyer. The Company's warranty shall run only to the first Buyer of a product from the Company, from the Company's distributor, or from an original equipment manufacturer reselling the Company's product, and is non-assignable and non-transferable and shall be of no force and effect if asserted by any person other than such first Buyer. This warranty applies only to the use of the product as intended by Seller and does not cover any misapplication or misuse of said product.

Warranty - Application

Hubbell Power Systems, Inc. does not warrant the accuracy of and results from product or system performance recommendations resulting from any engineering analysis or study. This applies regardless of whether a charge is made for the recommendation, or if it is provided free of charge.

Responsibility for selection of the proper product or application rests solely with the purchaser. In the event of errors or inaccuracies determined to be caused by Hubbell Power Systems, Inc., its liability will be limited to the re-performance of any such analysis or study.



NOTICE: For latest revision of our Catalog and Literature, please visit our web site: www.hubbellpowersystems.com

NOTE: Because Hubbell has a policy of continuous product improvement, we reserve the right to change design and specifications without notice.

©Copyright 2010 Hubbell Incorporated • 210 North Allen Street • Centralia, MO 65240 USA

www.hubbellpowersystems.com
E-mail: hpsliterature@hps.hubbell.com

Aluminum Band-Type Cluster Mounts

IMPORTANT!

The following condensed instructions are provided for general information and to aid the buyer in product selection. They are not to be used in actual product installation. Complete installation instructions and safety information are provided with each Cluster Mount unit.

Quick Installation

One worker can install the mount in minutes. Typically less than five minutes including transformer.

Rugged

6061T6 aluminum alloy is extruded for high strength. Corrosion resistant.

Convenient

Factory preassembled and boxed. Easy to store.

Installation



1. Remove from box. Hardware included with the mount.



2. Using the tape provided, measure pole at the desired mounting height. Cluster mount will adjust to a wide variety of poles. Adjustment can be made at the ground.



3. Use a lag screw installed into the pole to locate where you want the cluster mount positioned. The lag screw is used for positioning only and not to bear the load.



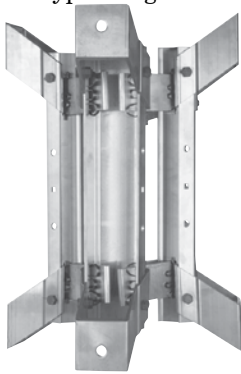
4. Tighten double-arming bolts. Mount transformers.



Models to mount one, two, or three transformers

• Double-band mounts for 3kVA - 100kVA transformers

For 3 through 100kVA transformers, use double band cluster mounts. Use any combination of 12" or 24" EEI-NEMA type A and B lugs as required. If adapters (page 5B-4) are used with the mounts, 167 through 250kVA transformers with EEI-NEMA type C lugs can be mounted.



Mounts Three Transformers		
Model	From pole	Wt. (lb./kg.)
C15M36*	6"	40/18.14
C15M39	9"	54.2/24.58
C15M3969	9"-6"-9"	50/22.67

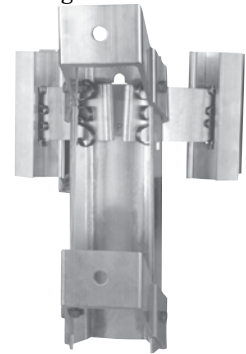
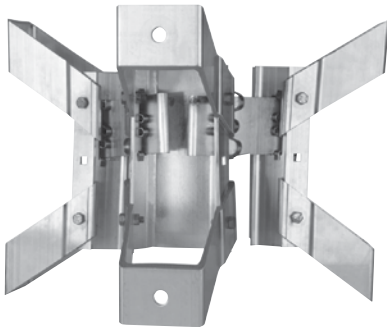
Mounts Two Transformers		
Model	From pole	Wt. (lb./kg.)
C10M26	6"	38/17.24
C10M29	9"	52/23.59

Mounts One Transformer		
Model	From pole	Wt. (lb./kg.)
C5M16	6"	35.7/16.19
C5M19	9"	50/22.68

* RUS Listed

• Single-band mounts for 3kVA - 50kVA transformers

For 3KVA through 50kVA, single-band cluster mounts may be used with 12" EEI-NEMA type A lugs.



Mounts Three Transformers		
Model	From pole	Wt. (lb./kg.)
C6M36*	6"	24.6/11.15
C6M39	9"	29.4/13.33
C6M3969	9"-6"-9"	28/12.7

Mounts Two Transformers		
Model	From pole	Wt. (lb./kg.)
C4M26	6"	22/9.97
C4M29	9"	27/12.24

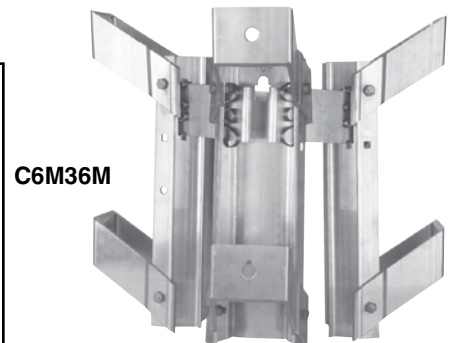
Mounts One Transformer		
Model	From pole	Wt. (lb./kg.)
C2M16M	6"	20/9.07
C2M19M	9"	25/11.33

* RUS Listed

For extra pole bearing surface

Use Model C6M36M when extra pole bearing surface is required.

Includes 5/8" transformer mounting hardware and ground clamp for mounting three 3kVA through 50kVA transformers with 12" EEI-NEMA type A lugs. Gives extra pole bearing surface for increased support on extremely soft or older poles. Ideal where appearance requires transformers to remain in a vertical position. **Shipping weight: 31.3 lb. / 14.2 kg.**

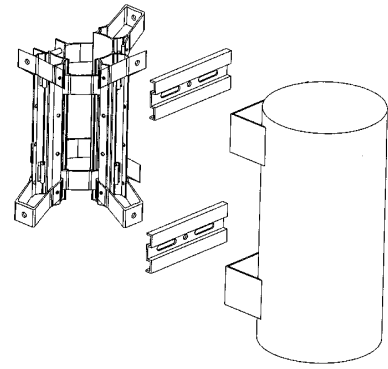
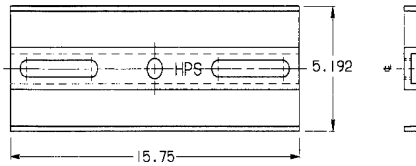


Accessories

Model C321A Adapter Plate

Shipping weight: XX lb./XX kg.

Use when mounting 167kVA and larger transformers with EEI-NEMA type C lugs (two plates required per transformer). Slot secures 3/4" mounting bolt head and permits one-hand tightening of bolt while providing jump proof feature. Each plate includes two 5/8" x 2" hot-dip galvanized machine bolts with nuts and lockwashers. Other mounting hardware is included with the cluster mount.



Model CEP18 Extension Plate

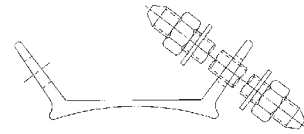
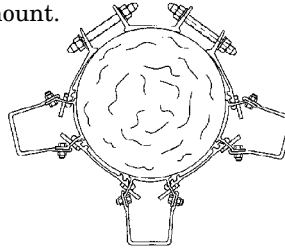
Shipping weight: XX lb./XX kg.

One CEP18 extension plate required for each band.

Example:

C6M36 (single band) use one CEP18

C15M36 (double band) use two CEP18's



CEP18 Extension Plates can be used with any Hubbell aluminum band-type cluster mount to increase pole range. (see chart below). Extra bolts, nuts, and washers are provided.

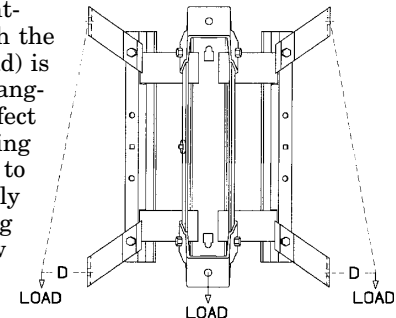
Pole Sizes

Hubbell band type Cluster Mounts can be mounted on poles 6 1/2" to 19" in diameter.

Type	Pole Dia.	Cat. No.	Example	EP18 Will Increase Max. Dia. To
Small	6 1/2" - 11 1/2"	Add 5 to Standard Model No.	C6M365 C15M365	16 1/2"
Standard	7 3/4" - 12 1/4"	Standard Models	C6M36 C15M36	17 1/4"
Large	9 1/2" - 14 1/2"	Add 14 to Standard Model No.	C6M3614 C15M3614	19 1/2"

Mount Loading

Cluster mounts are subjected to eccentric loading in service because transformer mounting brackets are located away from the lines of action of their gravity loads. Although the distance between the mounting face and the gravity load (the moment arm of the load) is often taken at 14", in reality it varies among the different models of transformer. By changing the bending moment associated with the vertical load, this variation may greatly affect the ability of the cluster mount to support the various transformers. Because the resisting stresses produced in the cluster mount are related to both the vertical load itself and to its associated moment, a single formula based on the moment arm will not satisfactorily predict safe loading. It is recommended that the moment arms be taken into account along with the weights of any transformers to be supported by cluster mounts. The table below shows minimum ultimate strength ratings of several Hubbell cluster mounts, suggested maximum transformer weights, and resultant safety factors for four selected values of moment arm. Trained personnel with adequate technical skills may find this information helpful in selecting an appropriate cluster mount to support a specific transformer.



Catalog Number	Distance (D) from transformer mounting surface to load's line of action	Minimum Ultimate Strength (lbs.)	Maximum recommended Transformer load (lbs.) per position	Safety Factor
C5M19 C10M29 C15M39 C15M3969	14"	6,000	2500	2.4
	18"	3,900	1950	2
	22"	3,200	1600	2
	26"	2,800	1350	2.1
C2M16 C4M26 C6M36	14"	3,400	1275	2.7
	18"	2,400	1000	2.4
	22"	2,100	820	2.6
	26"	1,650	690	2.4
C5M16 C10M26 C15M36	14"	6,400	3200	2
	18"	5,000	2500	2
	22"	4,000	2000	2
	26"	3,450	1725	2

Aluminum Wing-Type Cluster Mounts for 3 to *250kVA Transformers with NEMA A, B or C lugs

Light weight and pre-assembled for installation ease

To save you installation time and money, all Hubbell aluminum wing mounts are fully assembled. Two sizes are designed for mounting transformers on the ground and hoisting into position.

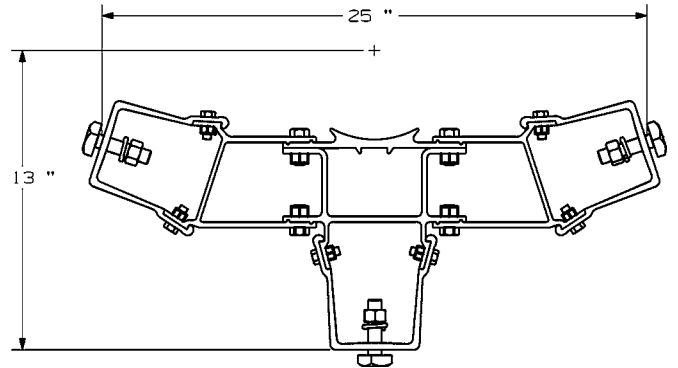
High-strength, unitized construction

For optimum strength and light weight, only 6061T6 aluminum extrusions are used to fabricate these transformer cluster mounts. The factory-assembled construction results in a rigid single unit ready for immediate field handling.

The unique design furnishes standard lifting provisions on both units.

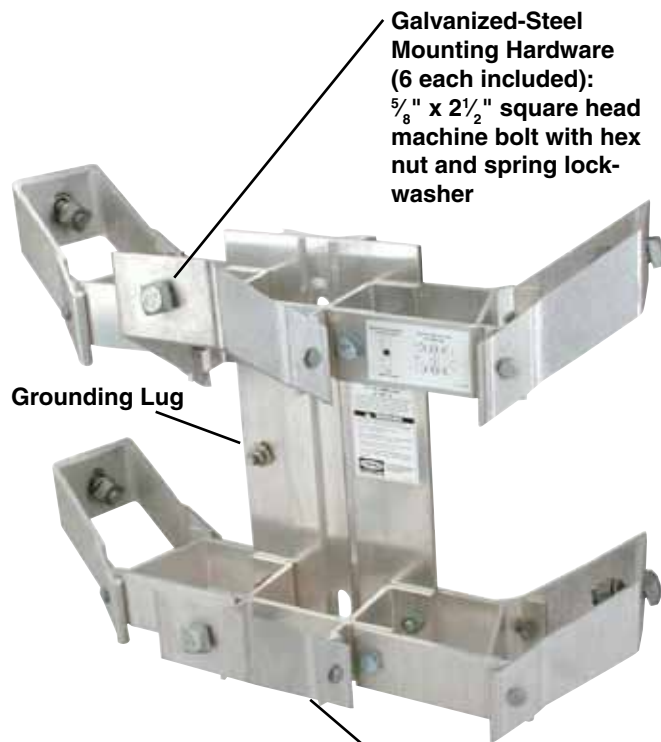
... continued on other side ...

*For 250kVA applications, see other side.



Catalog Number C3MW24ML

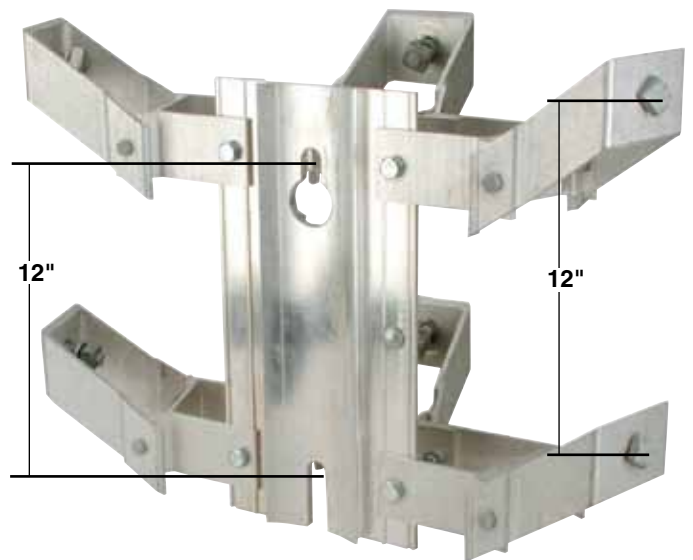
- For mounting up to three 50kVA transformers with NEMA A lugs
- Maximum 1,000 lb. per transformer position at 26" moment
- Mounts to pole with two 3/4" thru-bolts (not included)
- Illustrated instruction label on each unit
- Weight each: 30 lb. (13.6 kg.)



Galvanized-Steel Mounting Hardware (6 each included): 5/8" x 2 1/2" square head machine bolt with hex nut and spring lock-washer

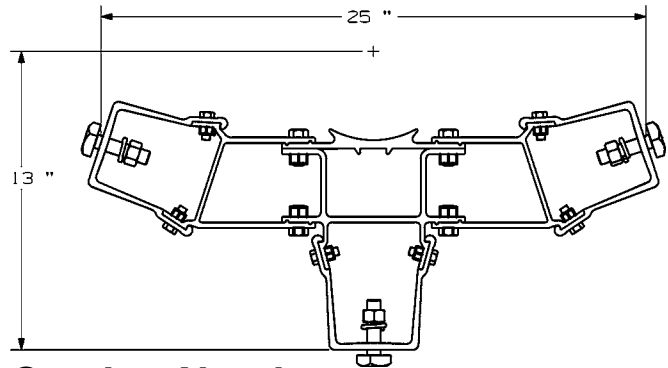
Grounding Lug

Lifting Notch (top & bottom, not visible here, see other side for illustration)



Aluminum Wing-Type Cluster Mounts for 3 to *250kVA Transformers with NEMA A, B or C lugs

Galvanized-Steel Mounting Hardware
(6 each included): High-strength $\frac{5}{8}$ " x $2\frac{1}{2}$ " machine bolt with special $\frac{3}{4}$ " square head and $\frac{5}{8}$ " threads for NEMA A & B lugs, hex nut and spring lockwasher

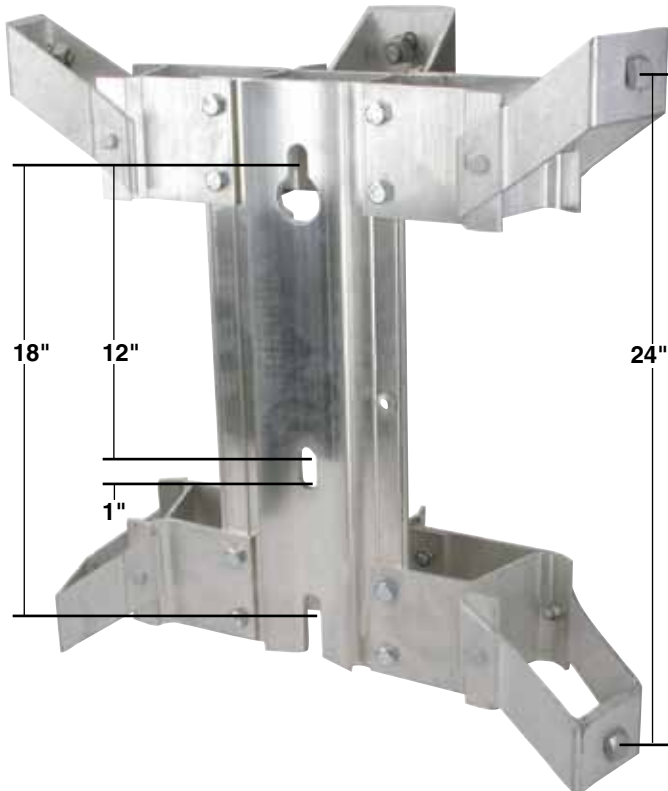


Catalog Number C11MW24L

- For mounting up to three 100kVA transformers with NEMA B lugs (24" centers)
Field adaptable for NEMA A lugs (12" centers)
- *For mounting 250kVA transformers with C lugs, add two C321A adapter plates per transformer
- Maximum 2,000 lb. per transformer position at 26" moment
- Mounts to pole with two or three $\frac{3}{4}$ " thru-bolts (not included)
- Illustrated instruction label on each unit
- Weight each: 42.8 lb. (19.4 kg.)

*Optional, for mounting three 250kVA Transformers with NEMA Type C lugs (see Catalog page 5B-4)

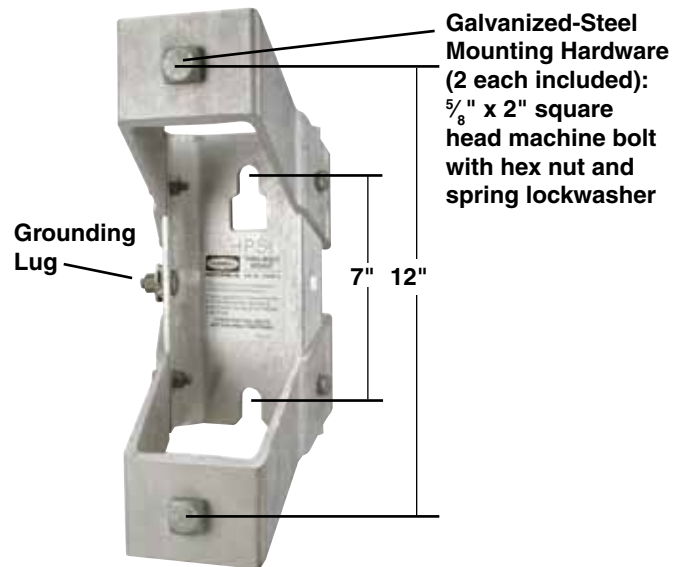
Cat. No.	Description	Weight, each
C321A	*Adapter Plate (two required per transformer) for use with C11MW24L	4 lb./1.8 kg.



Thru-Bolt Single-Position Aluminum Mounts for Transformer, Recloser or Sectionalizer with NEMA A, B or *C lugs

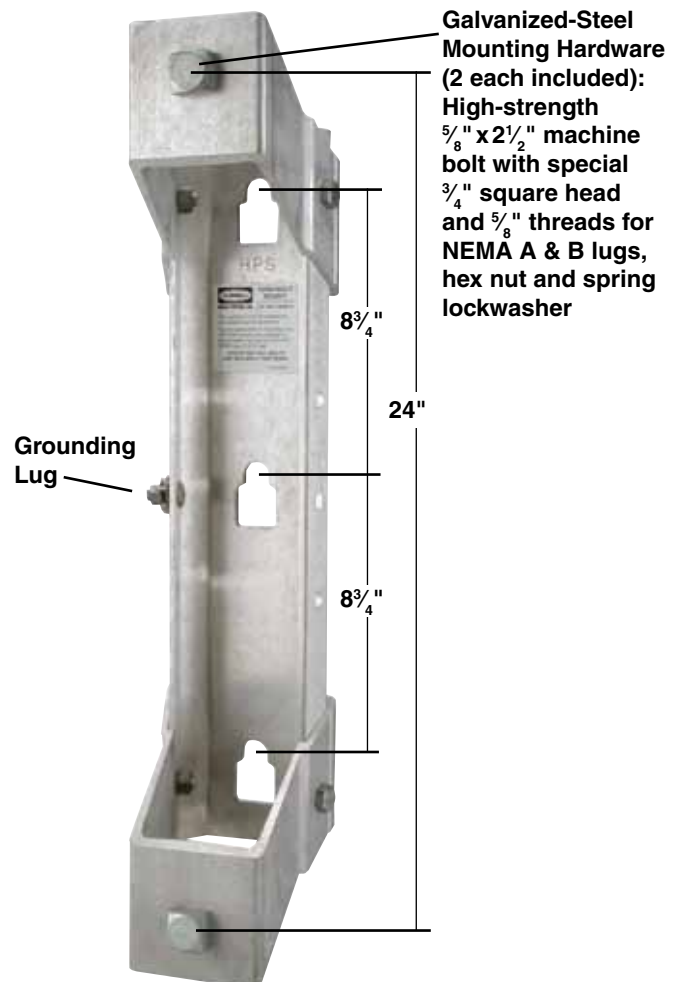
- For mounting one 3kVA - 50kVA Transformer, Recloser or Sectionalizer with NEMA A lugs
- Maximum capacity is 2,000 lb.
- Mounts to pole with two $\frac{5}{8}$ " thru-bolts (not included)
- Illustrated instructions included with each unit

Catalog No.	Mounting Distance from Pole	Weight
CTB2M16	6"	7.2 lb./3.3 kg.
CTB2M19	9"	8.3 lb./3.8 kg.



- For mounting one 3kVA - 100kVA Transformer, Recloser or Sectionalizer with NEMA A or B lugs (Readily field adapts for NEMA A lugs.)
- *For mounting one 167kVA - 333kVA Transformer, Recloser or Sectionalizer with NEMA C lugs, add two C321A adapter plates*
- Maximum capacity is 2,000 lb. with two thru-bolts and 3,000 lb. with three thru-bolts
- Mounts to pole with two or three $\frac{3}{4}$ " thru-bolts (not included)
- Illustrated instructions included with each unit

Catalog No.	Mounting Distance from Pole	Weight
CTB5M16	6"	12.1 lb./5.5 kg.
CTB5M19	9"	13.7 lb./6.2 kg.



*Optional, for mounting one transformer, recloser or sectionalizer with NEMA Type C lugs (see Catalog page 5B-4)

Catalog No.	Description	Weight, each
C321A	*Adapter Plate (two required) for use with CTB5M16 or CTB5M19	4 lb./1.8 kg.

Aluminum Band-Type Cluster Mounts Jumbo Model

**for 3 to 500kVA Transformers
with EEI-NEMA A, B or *C lugs**

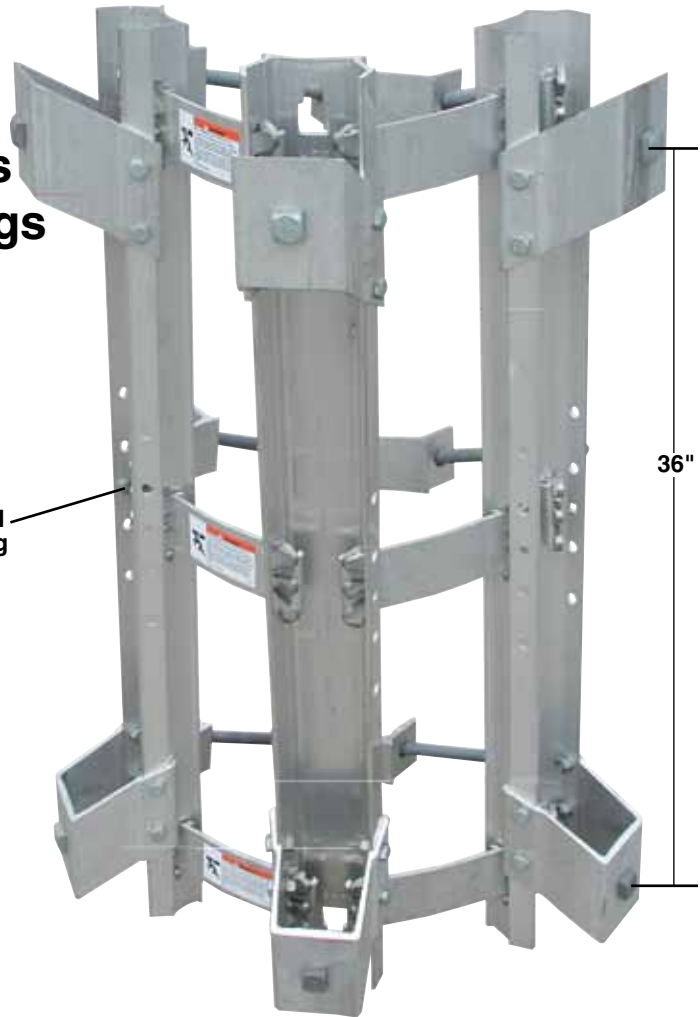
- Three-band clusters mount up to three 500kVA transformers and regulators with EEI-NEMA *C lugs (36" vertical spacing).

- Field adaptable for EEI-NEMA A or B lugs (12" or 24" vertical spacing).

Stainless Steel
Grounding Lug

- Mounts to poles with diameters from 9½" to 14½". Each unit includes three CEP18 extension plates (page 5B-4) to increase diameter by 5" (to 19½").

- To accommodate four-hole EEI-NEMA *C lug mountings, C321A adapter plates can be purchased separately (page 5B-4).



Catalog Number, Jumbo Mount	Distance from Pole to Mounting Pad	Weight, each Jumbo Mount	Distance from Mounting Pad to Center of Equipment			
			14"	18"	22"	26"
			Maximum Recommended Equipment Load per Phase			
C15M361436	6"	77 lb./34.9 kg.	5,000 lb.	3,900 lb.	3,200 lb.	2,700 lb.
C15M391436	9"	80 lb./36.3 kg.	4,000 lb.	3,100 lb.	2,550 lb.	2,100 lb.