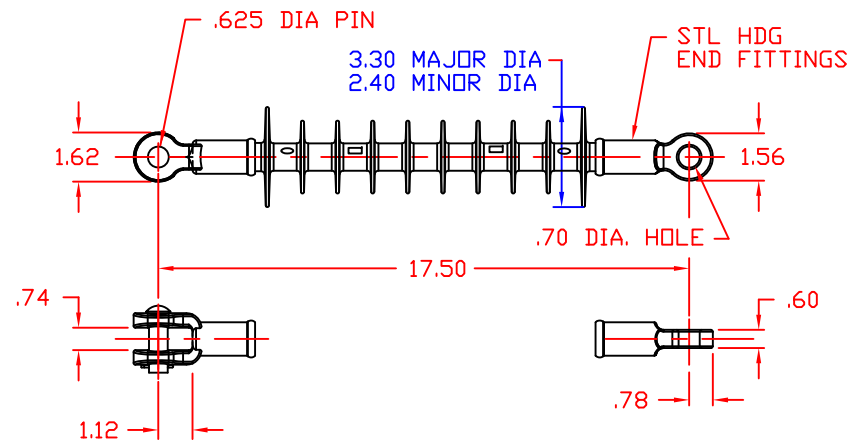


DESIGN CHARACTERISTICS

LEAKAGE DISTANCE	-----	26 IN.
60 Hz DRY FLASHOVER	-----	130 KV
60 Hz DRY WITHSTAND	-----	110 KV
60 Hz WET FLASHOVER	-----	110 KV
60 Hz WET WITHSTAND	-----	90 KV
IMPULSE CRITICAL POSITIVE	-----	200 KV
IMPULSE CRITICAL NEGATIVE	-----	225 KV
MAX. RIV AT 1000 kHz	-----	10 μV
RIV TEST VOLTAGE	-----	20 KV
POWER ARC	-----	150 kA CYCLES
NET WEIGHT	-----	2.4 LBS
TENSION PROOF TEST	-----	10000 LBS
ULTIMATE TENSION STRENGTH	-----	15000 LBS
ND. OF WEATHERSHEDS	-----	8



DESIGN CHARACTERISTICS

LEAKAGE DISTANCE	-----	26 IN.
60 Hz DRY FLASHOVER	-----	140 KV
60 Hz DRY WITHSTAND	-----	115 KV
60 Hz WET FLASHOVER	-----	120 KV
60 Hz WET WITHSTAND	-----	105 KV
IMPULSE CRITICAL POSITIVE	-----	235 KV
IMPULSE CRITICAL NEGATIVE	-----	250 KV
MAX. RIV AT 1000 kHz	-----	10 μV
RIV TEST VOLTAGE	-----	20 KV
POWER ARC	-----	150 kA CYCLES
NET WEIGHT	-----	2.4 LBS
TENSION PROOF TEST	-----	10000 LBS
ULTIMATE TENSION STRENGTH	-----	15000 LBS
ND. OF WEATHERSHEDS	-----	10

CONFIDENTIAL: THIS DRAWING AND ITS CONTENTS ARE CONFIDENTIAL AND THE EXCLUSIVE PROPERTY OF HUBBELL POWER SYSTEMS. NO PUBLICATION, DISTRIBUTION OR COPIES MAY BE MADE WITHOUT THE WRITTEN CONSENT OF HUBBELL POWER SYSTEMS. HUBBELL POWER SYSTEMS UNPUBLISHED ALL RIGHTS RESERVED UNDER THE COPYRIGHT LAWS.	HUBBELL POWER SYSTEMS			
	TITLE PDI-28/DS-28 ORIGINAL DESIGN			
	SIZE	DWG NO.	CAT / PART / ASSY NO.	REV
S	--	401028-0215	0	
DO NOT SCALE THIS DRAWING		DRN BY MKTING DATE 12/16/10	SHEET 1 OF 1	

CONFIDENTIAL: THIS DRAWING AND ITS CONTENTS ARE CONFIDENTIAL AND THE EXCLUSIVE PROPERTY OF HUBBELL POWER SYSTEMS. NO PUBLICATION, DISTRIBUTION OR COPIES MAY BE MADE WITHOUT THE WRITTEN CONSENT OF HUBBELL POWER SYSTEMS. HUBBELL POWER SYSTEMS UNPUBLISHED ALL RIGHTS RESERVED UNDER THE COPYRIGHT LAWS.	HUBBELL POWER SYSTEMS			
	TITLE PDI-28/DS-28 REVISED DESIGN			
	SIZE	DWG NO.	CAT / PART / ASSY NO.	REV
S	--	401028-0215	0	
DO NOT SCALE THIS DRAWING		DRN BY MKTING DATE 12/16/10	SHEET 1 OF 1	