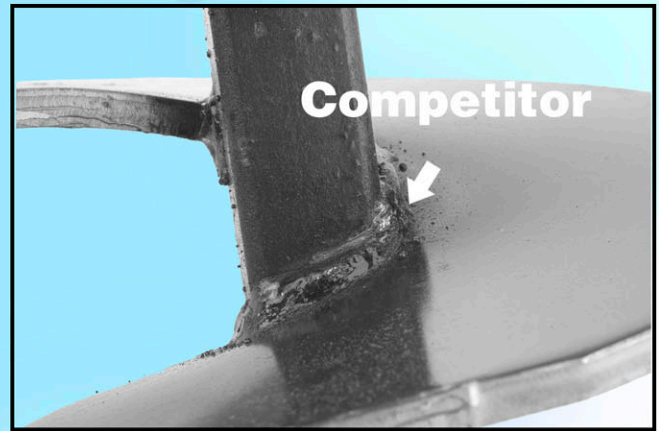
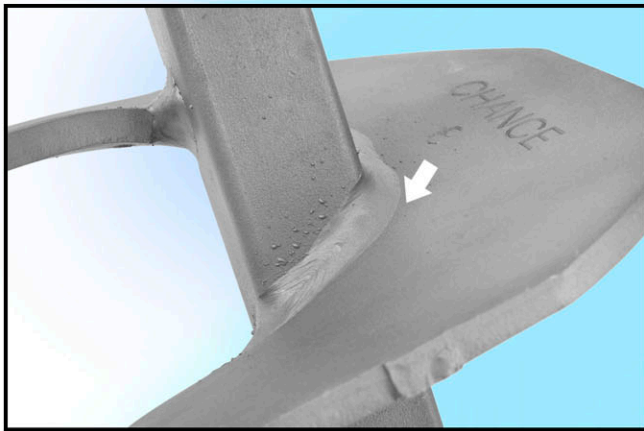


BREAKING ANCHORS?



Switch to **CHANCE**[®]
and avoid the problem



- Chance helices are true with a tailing edge that follows the leading edge into the ground. This makes for easier, quicker penetration and less soil disturbance for anchor holding power you can be confident in. The secret is that Chance uses matching dies in manufacturing for a true helix. Not a helix that will increase soil disturbance and contribute to breakage.
- Chance automated welders help provide a consistent, superior weld. A weld that resists breakage.
- Chance tests production anchors on a consistent basis to monitor design integrity and strength ratings.



POWER SYSTEMS, INC.

E-mail: hpsliterature@hps.hubbell.com
Web: www.hubbellpowersystems.com

ANDERSON CHANCE[®] FARGO[®] HUBBELL[®] OHIO/BRASS[®]

Hubbell Power Systems, Inc. • 210 N. Allen St., Centralia, MO 65240 • Phone: 573-682-5521 • fax: 573-682-8714
Note: Because Hubbell has a policy of continuous product improvement, we reserve the right to change design and specifications without notice.