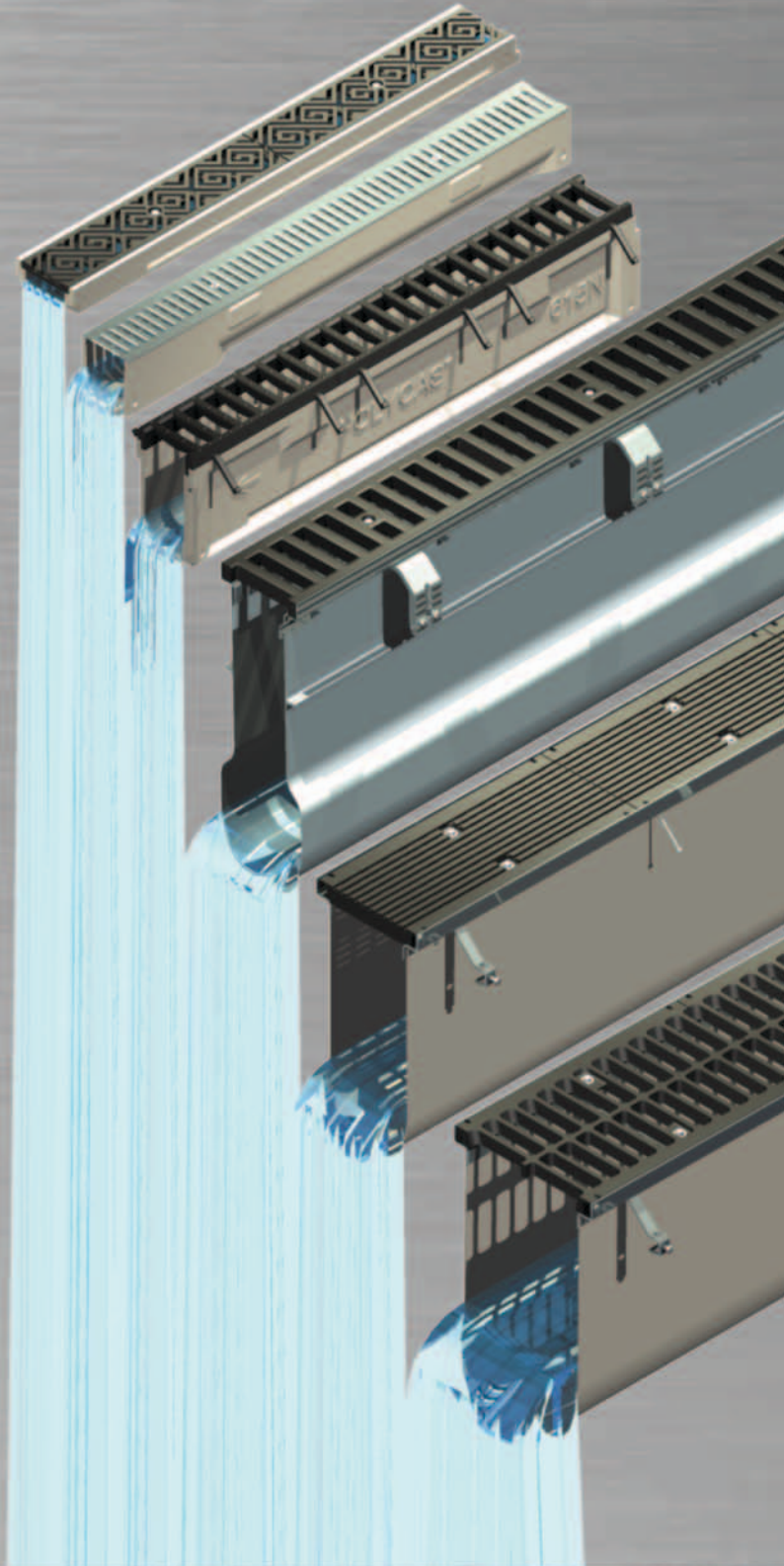


POLYCAST[®]

PRESLOPED TRENCH DRAIN SYSTEMS

THE BENEFITS OF POLYCAST

- Strong
- Lightweight
- Easy to Install
- Built-in Slope
- Smooth Interior
- Cost Effective
- Corrosion Resistant
- Not Water Absorbent



Unpredictable Environments. Damaging Conditions.

Expanding on a Competitive Strength

Through its distinguished Polycast® brand, Hubbell has harnessed one of its competitive strengths and offers a full line of trench drain systems to meet customer needs.

Well versed in delivering the utility industry with reliable solutions for unpredictable, damaging environments, Hubbell brings that same level of expertise to the civil construction and transportation industries with a superior drain system - Polycast®.

Hubbell Power Systems employs over 3300 people worldwide and leads the way in the production of products and components for the utility industry,

The 20% Advantage
48" vs. Meter Channel Lengths

- Fewer Channels
- Fewer Joints
- Faster Installation
- Fewer Problems



Smooth interior of Polycast drains assures complete drainage



Polycast Proven Superior

Made of a high strength, chemical resistant, composite material, Polycast drains offer a high degree of chemical resistance and have a water absorption value of less than one percent (ASTM C140). In short, Polycast Polymer Concrete is more than four times stronger than ordinary Portland Cement Concrete, simplifies installation and lowers overall costs.

- Ideal for indoor and outdoor applications
- Offers superior versatility with 24" and 48" components
- Rapid drainage and durability
- Polycast 3000 Series (a pultruded FRP drain) offers flow Rates of more than 3000 GPM for 120' of drain
- Resistant to freeze/thaw cycles (ASTM C666)
- The FP Series installs easily and boasts flow rates of up to 6800 GPM

Applications

COMMERCIAL

- Vehicle Maintenance
- Airports
- Highway and Roads/Curbs
- Schools

INDUSTRIAL

- Manufacturing
- Chemical Plants
- Bottling
- Food Processing

400 SERIES



The 400 Series is a complete surface drainage system with a polyester polymer concrete trench and galvanized steel grate. This is designed specifically for pedestrian traffic areas.

500 SERIES



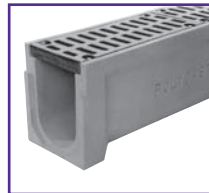
The 500 Series Deck Drain is the ideal solution for a wide variety of applications with incidental water runoff. Available with decorative grating options, the 500 Series can add unique style to any surrounding.

600 SERIES



The 600 Series is an extremely versatile, 4.25" internal width drain system. Designed for a variety of applications, the 600 Series is available with cast iron frames to stand up the even the most harsh environments.

800 SERIES



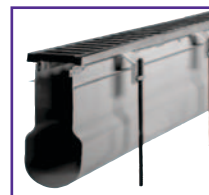
The 800 Series Channel is for high volume situations that exceed the capacity of Polycast 600 series. This channel is designed for areas of high volume, cross-flow interception, or areas where the large cross section is necessary.

900 SERIES



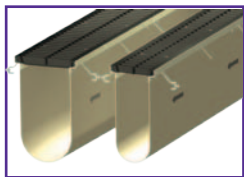
The 900 Series drainage system is designed specifically for highway and airport use. Based on 600 Series channels, this system features embedding anchors to secure grates firmly into the surrounding slab. This system is an economical solution for roadway (DOT) surface drainage applications.

3000 SERIES



The 3000 Series is an high capacity drain system designed for roadways and airports. Featuring flow rates of over 3000 GPM, multiple slopes and a unique bulb shape design, the Polycast 3000 Series is an civil engineer's dream. This system installs quickly and easily and is a perfect solution for many FAA and DOT specified projects.

FP SERIES

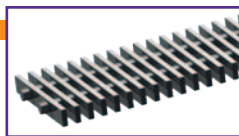


The FP Series by Polycast is the ideal solution for fast installation of long runs in concrete slabs. Available in 8" and 12" internal widths, it features gel coated fiberglass channels and is designed to be very installer friendly.

GRATES

Polycast offers a wide range of grating designs and materials to meet virtually any need (more gratings available than pictured here). For a secure fit, Polycast grates are held tight to the drain by special hold-down bars, which lock into insert slots cast into the channel walls or frames.

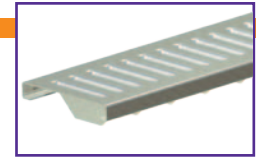
Fiberglass Grates are designed for use in areas requiring chemical resistance. The clear opening between the bars is 5/8".



Fiberglass



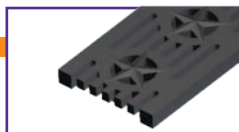
Ductile Iron



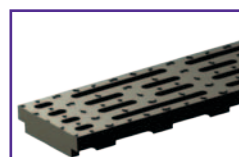
Galvanized
or Stainless Steel

Polycast Ductile Iron and Steel Grates are designed for pneumatic tire vehicles at low to moderate speed.

Decorative Grates are designed to enhance the appearance of the 500 and 600 series channels. There are 5 unique options to meet your needs.



Patriot



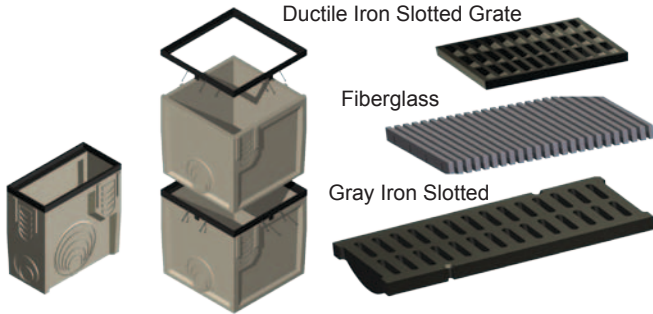
Transverse Grate



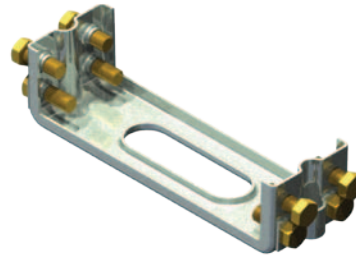
Slotted Grate

Accessories

Catch Basins & Catch Basin Grates



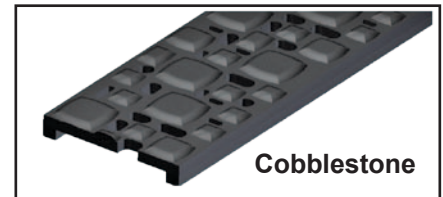
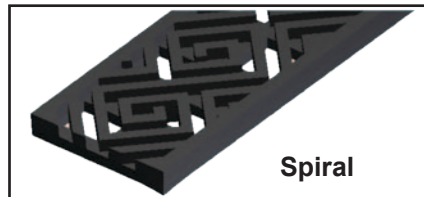
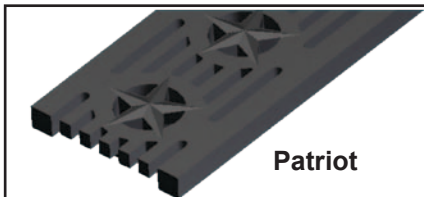
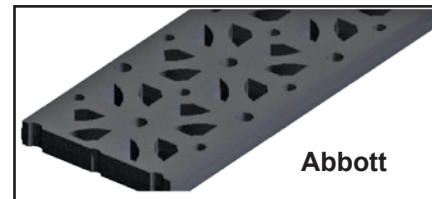
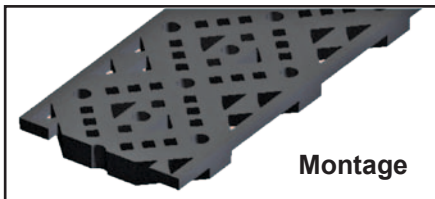
Installation Alignment Chair



End Caps



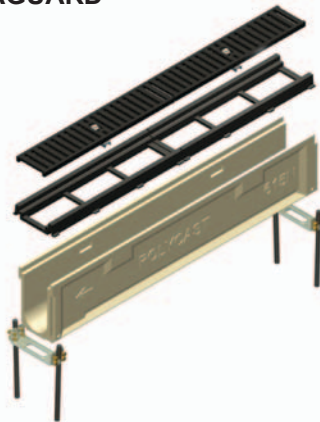
Decorative Grates



Frames

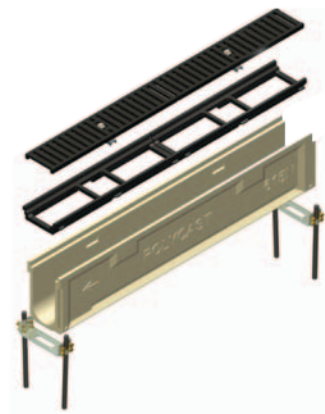
DURAGUARD

The DURAGUARD series frame is an innovative design that improves heavy load impact performance. Utilizing a high density polyethylene composite, the DURAGUARD channel frame reinforces the channel edge to dramatically improve the load performance and impact resistance of standard 500 series and 600 series channels. DURAGUARD frames are recommended for DIN class C – E applications.



HARDNOSE – 700 Series

HARDNOSE – 700 Series frames are designed for the most harsh vehicle applications including heavy aircraft traffic, hard wheel forklifts, industrial equipment, and construction equipment. These gray iron frames are inlaid on the top of conventional 500 Series and 600 Series channels. HARDNOSE frames are recommended for DIN class D – F applications.



POLYCAST®

3621 Industrial Park Drive, Lenoir City, TN 37771
Phone: 800-346-3061 or 865-986-9726 Fax: 865-986-0585
<http://www.polycastdrain.com>
hpsliterature@hps.hubbell.com

