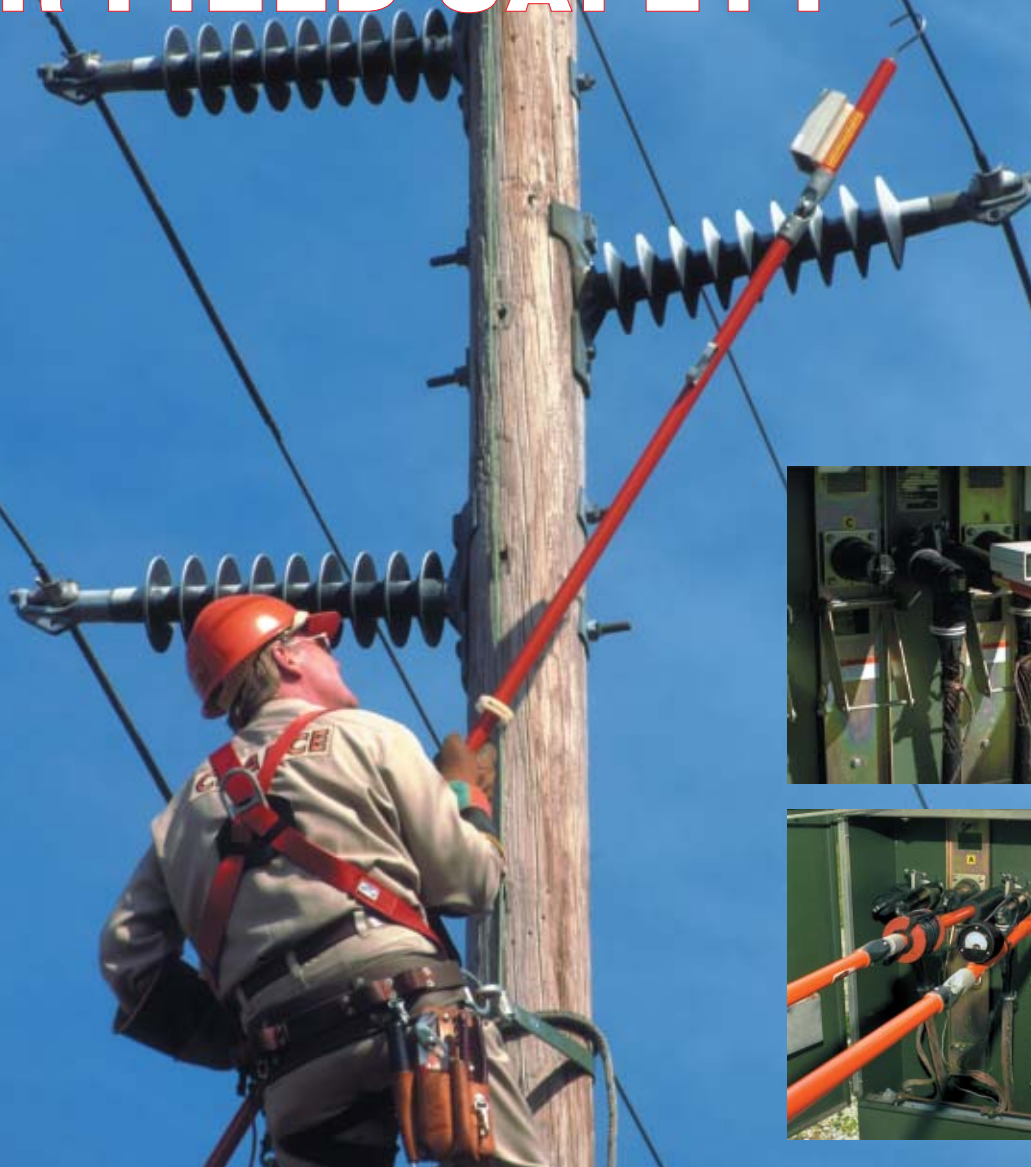


# TEST INSTRUMENTS FOR FIELD SAFETY



## CHANCE<sup>®</sup>

For direct testing of transmission and distribution lines, overhead or underground, get the job-related advantages of Chance instruments.

All are simple to operate, include illustrated instructions. Each comes with a built-in self-test or an easy-to-use verification tester is available.

- Seven models of the Phasing Tester cover the 1 to 161kV range. Analog for multiple functions: ID phases, voltage reading, hi-pot testing.
- Two models of the Digital Voltage Indicator for 1 to 161kV range. Digital display retains highest reading for 1 minute or until reset.
- Three Multi-Range Voltage Detector models for 1 to 600 kV range. Analog readout lets you distinguish line voltage from static or induced.

Developed with our customers involvement, Chance hot-line meters belong on your system, too. Everywhere. Everyday. They're essential to your crews' safe practice of your maintenance, operation and construction procedures.



**POWER  
SYSTEMS, INC.**

<http://www.hubbellpowersystems.com>

**ANDERSON<sup>™</sup> CHANCE<sup>®</sup> FARGO<sup>®</sup> HUBBELL<sup>®</sup> OHIO/BRASS<sup>®</sup>**

**UNITED STATES** • 210 N. Allen • Centralia, Mo 65240 • Phone: 573-682-5521 • Fax: 573-682-8714 • e-mail: [hpscontact@hps.hubbell.com](mailto:hpscontact@hps.hubbell.com)  
**CANADA** • 870 Brock Road South • Pickering, Ontario L1W 1Z8 • Phone: 905-839-1138 • Fax: 905-831-6353 • e-mail: [infohps@hubbellonline.com](mailto:infohps@hubbellonline.com)  
**MEXICO** • Av. Coyoacan No. 1051 • Col. Del Valle • 03100 Mexico, D.F. • Phone: 52-55-9151-9999 • Fax: 52-55-9151-9988 • e-mail: [vtasdf@hubbell.com.mx](mailto:vtasdf@hubbell.com.mx)