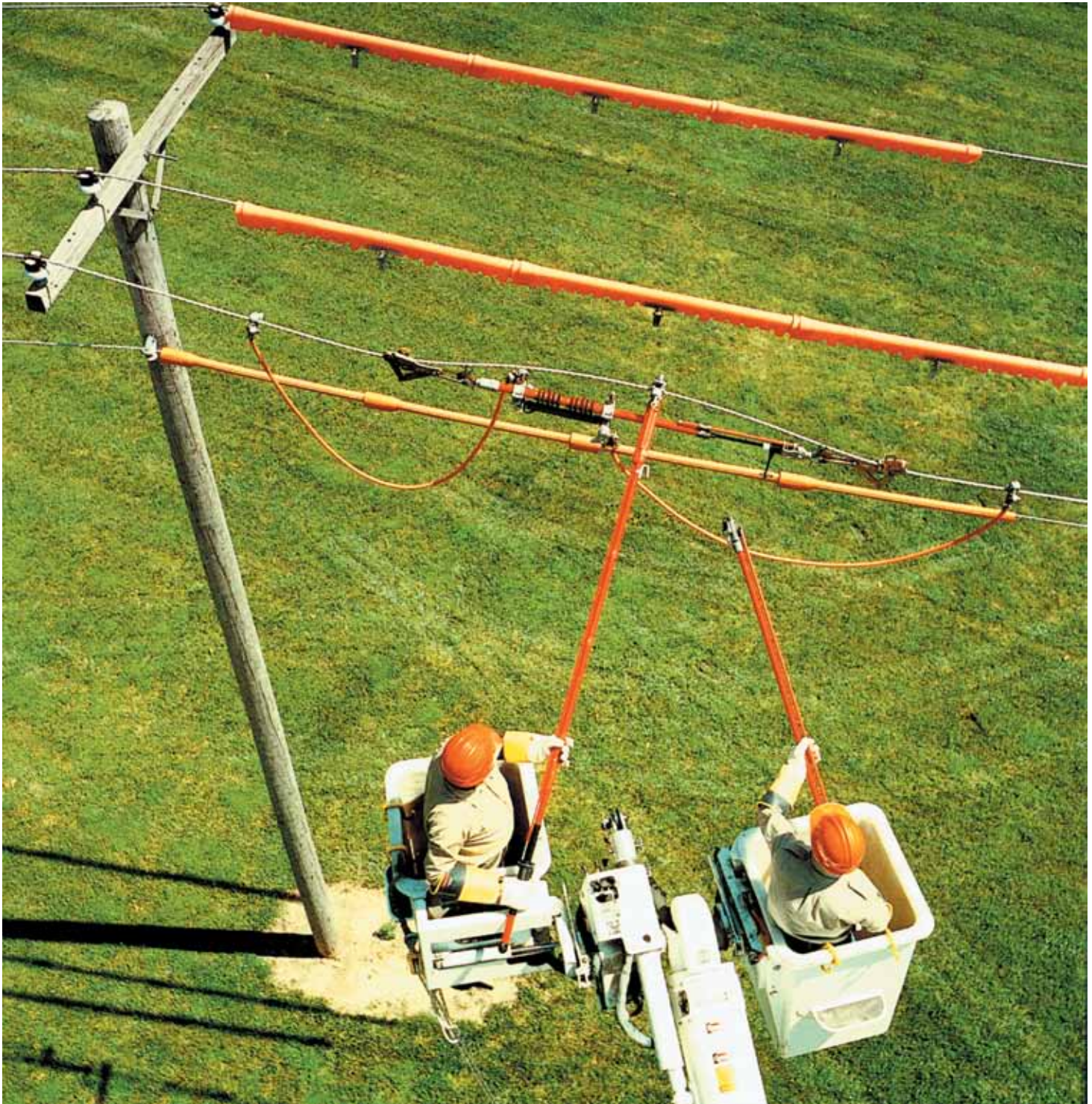


CHANCE[®]

Tension Puller Switching Tool



NOTE: Because Hubbell has a policy of continuous product improvement, we reserve the right to change design and specifications without notice.



**POWER
SYSTEMS, INC.**

573-682-5521

Fax 573-682-8714 <http://www.hubbellpowersystems.com>

UNITED STATES • 210 N. Allen • Centralia, Mo 65240 • Phone: 573-682-5521 • Fax: 573-682-8714 • e-mail: hpscontact@hps.hubbell.com

CANADA • 870 Brock Road South • Pickering, Ontario L1W 1Z8 • Phone: 905-839-1138 • Fax: 905-831-6353 • e-mail: infohps@hubbellonline.com

MEXICO • Av. Coyoacan No. 1051 • Col. Del Valle • 03100 Mexico, D.F. • Phone: 52-55-9151-9999 • Fax: 52-55-9151-9988 • e-mail: vtasdf@hubbell.com.mx

07-9303

Cut hot lines and keep the power with Tension Puller Switching Tool

Design enables portable temporary distribution sectionalizing

Two tools in one is an understatement about this one.

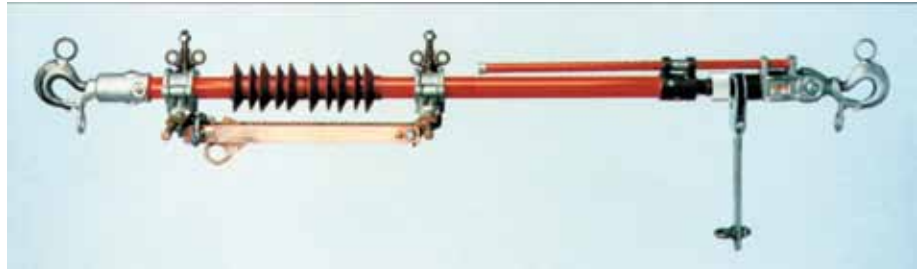
Not only does it give you a way to both cut a live line and de-energize at will. It also can revert to a tension puller alone — for jobs that need just that — by quickly shedding its switch on the spot.

Two proven components

Hot parts of the Chance LTD® line-tension disconnect switch include: Silver-plated contacts, rigid H-frame copper switchblade and pull ring with pry-lever latch for easy opening and ice-breaking action.

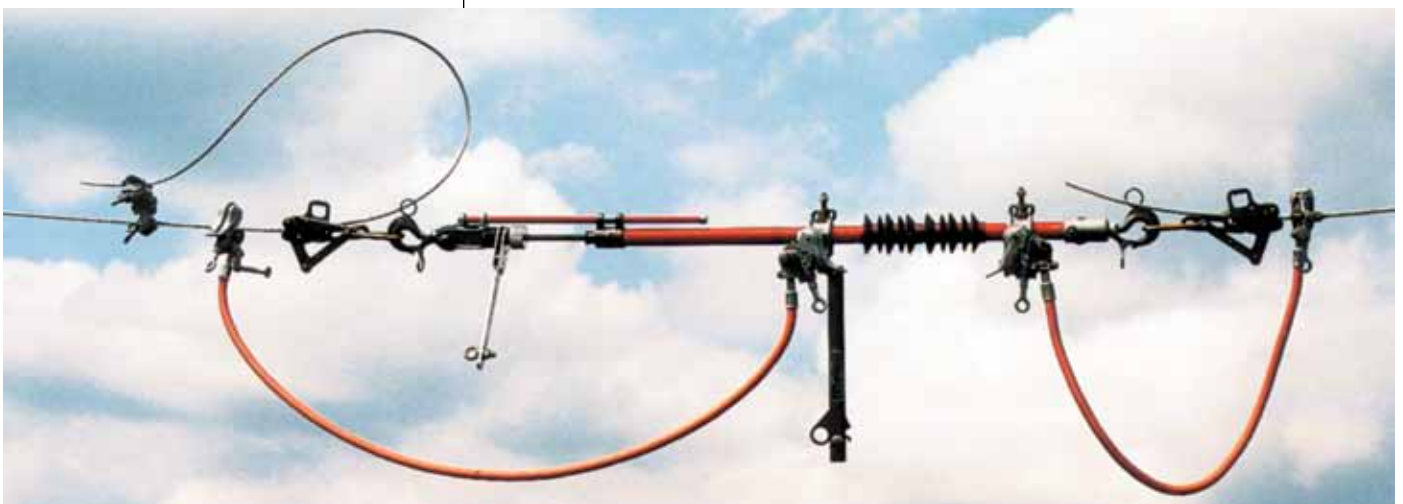
For this special tool, weathershed skirts of a tough polymeric are bonded to the 1½"-dia. Epoxiglas® pole. To secure the removable switch hot parts, a compression clamp aligns on a locating pin at each end of the skirts.

A bypass stud (½"-dia.) added at



Tension Puller Switching Tool — Catalog No. C400-1907
Specifications

Maximum Electrical Ratings	
	35 kV phase-to-phase system voltage
	600 amps continuous current
	150 kV BIL
Capacity	Line tension up to 4,000 lb. (1,800 kg.)
Working Range	58 to 70 in. (1,473 to 1,778 mm)
Maximum Take-Up	12 in. (305 mm)
Insulation	
	Minimum 24 in. (610 mm)
	Maximum 36 in. (914 mm)
Length	60 in. (1,524 mm)
Weight	22 lb. (9.9 kg.)



For applications wherever needed to temporarily sectionalize a line, properly opening the switch requires an approved portable loadbreak tool designed for use with switches. Galvanized-steel hooks on the switch provide for such operation.



1 Suspended from hot-line wire grips with the disconnect switch closed, the tension puller works like a jack. Operating the ratchet wrench brings the tool's two ends closer.



4 To hold the conductor to be cut, a tieback clamp is first secured to the long end of the jumpered section. Tieback clamp C400-0600 fits #4 to 397.4 kcmil ACSR.



2 With tension reduced on the conductor between the tool's hooks, hot-line jumpers sized to the application are installed on the tool's bypass studs.



5 To maintain control of the conductor, the clampstick secures the eyescrew of tieback clamp's second jaw while insulated hydraulic cutters are used on the conductor.



3 Both jumper sets create a parallel circuit alongside the switch.



6 Tieback clamp's second jaw secures open loop of conductor to itself. This completes preparations for the switch to perform its line-sectionalizing operation.

each end of the switch accepts clamps up to 3" wide.

Rubber gloves or hotsticks sectionalizing procedure

Equipped with handling rings, this tool may be installed by either hot-line tools or rubber-glove live-line techniques. Hooks are fixed so as not to swivel. Spring-loaded safety hook latch gates rotate 135° to

open.

Illustrated instructions included with each unit give application considerations for installation, operation and maintenance.

For additional recommendations, refer to the ANSI C37.35 IEEE Guide for the Application, Installation, Operation and Maintenance of High Voltage Air Disconnecting and Load Interrupter Switches.

Simple changeover for 'switchless' tensioning

Being able to convert this temporary hot-line sectionalizer tool to a standard tension puller makes this tool doubly effective. Being able to do that in the field makes it ideal for life on a line crew.

Here's how, when line sectionalizing



is not part of a hot-line procedure, but line tensioning is: First, simply loosen the wing nut on both the pole clamps at the ends of the switch hot parts. Open the clamps with care, so as not to scar the Epoxiglas® pole.

It's just that simple. Like all Chance hot-line tools, it's designed to make difficult operations easier to perform. And built to exacting specifications to join the many other practical tool "members" on your most productive crews. □



Selector switch on ratchet wrench is extra large for easy operation by hot-stick and rubber-glove methods.



Locating pins in the Epoxiglas® pole ensure proper alignment of clamps for easy removal and replacement of switch hot parts.



TIPS & NEWS

Reprinted from
CHANCE TIPS
SEPTEMBER 1993