



**POWER
SYSTEMS, INC.**

PRODUCT

of the Month

Web: <http://www.hubbellpowersystems.com>

E-mail: hpsliterature@hps.hubbell.com



New EQUI-MAT™ Personal Protective Ground Grid

To comply with OSHA 1920.269, EQUI-MAT™ Personal Protective Ground Grid provides a portable equipotential zone for workers on the ground just as a cluster bar (chain binder) does in overhead grounding practices. This item consists of a grillwork of flexible copper braid on a durable mat to be connected to the de-energized system component or vehicle and a known ground. Available in three sizes (5'x5', 5'x10' and 10'x10'), the EQUI-MAT Grids may be joined simply for larger work areas. A kit in each size also is available to include a dedicated grounding cable set and storage bag.

BUSHINGS • CONSTRUCTION • INSULATION • PROTECTION • SWITCHING • TOOLS

Contact your nearest Hubbell office . . .

UNITED STATES • 210 N. Allen • Centralia, Mo 65240 • Phone: 573-682-5521 • Fax: 573-682-8714 • e-mail: hpsliterature@hps.hubbell.com
CANADA • 870 Brock Road South • Pickering, Ontario L1W 1Z8 • Phone: 905-839-1138 • Fax: 905-831-6353 • e-mail: infohps@hubbellonline.com
MEXICO • Av. Coyoacan No. 1051 • Col. Del Valle • 03100 Mexico, D.F. • Phone: 52-55-9151-9999 • Fax: 52-55-9151-9988 • e-mail: vtasdf@hubbell.com.mx
ASIA • 23 Tagore Lane #03-16 • Tagore 23 Warehouse • Singapore 787601 • Phone: 65-6454-4772 • Fax: 65-6454-4775 • e-mail: hpsliterature@hps.hubbell.com

Bulletin 19-2000

MAY 1/01

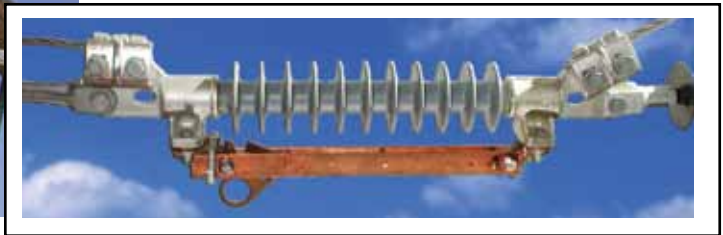
rev 7/10



**POWER
SYSTEMS, INC.**

PRODUCT

of the Month



Hookstick 1-Ø Switches Now Feature Polymer Insulators

Chance crossarm-mounted and in-line hookstick switches now feature polymer insulators. All are in the freshly revised Catalog Section 14B: RUS accepted M3 switch for crossarms and substations and the ALTD in-line, all for 15 - 35kV systems. The M3 switch now comes with ESP™ Polymer or Porcelain insulators. The ALTD, supported by an EPDM insulator, combines mechanical and electrical connections on same end fittings. With an Arc Chute Interrupter, the ALTD also is offered in a Loadbreak version.

Web: <http://www.hubbellpowersystems.com>

E-mail: hpsliterature@hps.hubbell.com

BUSHINGS • CONSTRUCTION • INSULATION • PROTECTION • SWITCHING • TOOLS

Contact your nearest Hubbell office . . .

UNITED STATES • 210 N. Allen • Centralia, Mo 65240 • Phone: 573-682-5521 • Fax: 573-682-8714 • e-mail: hpsliterature@hps.hubbell.com
CANADA • 870 Brock Road South • Pickering, Ontario L1W 1Z8 • Phone: 905-839-1138 • Fax: 905-831-6353 • e-mail: infohps@hubbellonline.com
MEXICO • Av. Coyoacan No. 1051 • Col. Del Valle • 03100 Mexico, D.F. • Phone: 52-55-9151-9999 • Fax: 52-55-9151-9988 • e-mail: vtasdf@hubbell.com.mx
ASIA • 23 Tagore Lane #03-16 • Tagore 23 Warehouse • Singapore 787601 • Phone: 65-6454-4772 • Fax: 65-6454-4775 • e-mail: hpsliterature@hps.hubbell.com

Bulletin 19-2000
MAY 1/01