

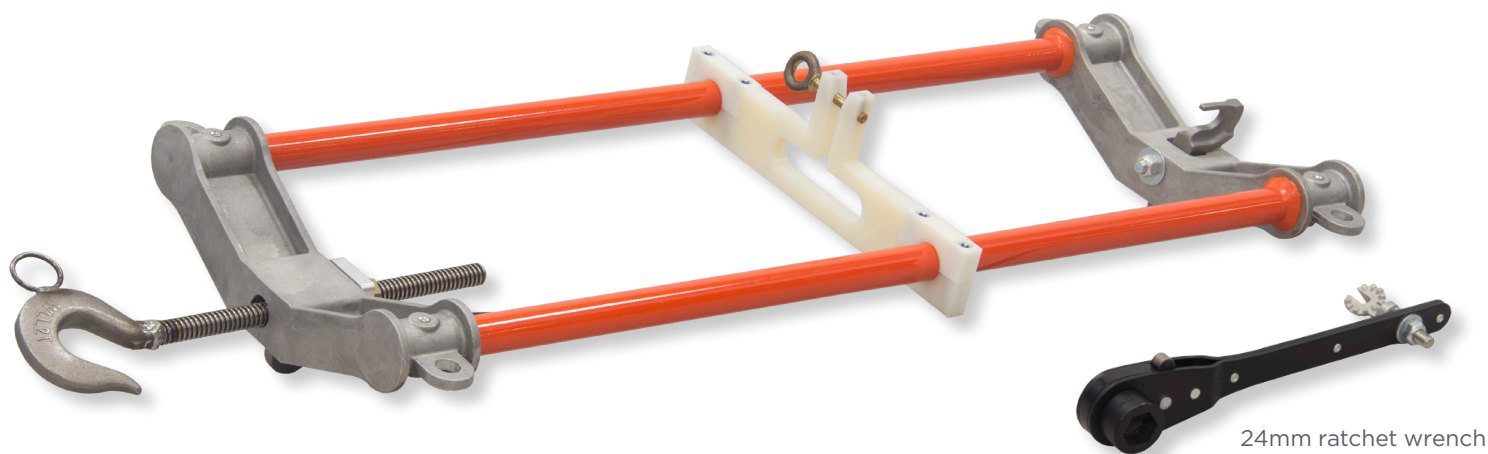
SYMMETRICAL TENSION PULLER

FOR CHANGING OUT INSULATOR STRINGS

Tension puller tool for changing out insulator strings with bells up to 10" (25.4 cm) diameter.

FEATURES

- Takes up mechanical tension from the conductor to change the insulator string
- Made with CHANCE® Epoxiglas® poles manufactured and tested per ASTM F711 and IEC 60855
- Accommodates insulator string with hardware up to 30" (76 cm)
- Max load rating 4,000 lbs (1,779 daN)
- Removable/adjustable holding device included
- Includes 24mm ratchet wrench with universal adapter (also available separately)



CATALOG NO.	DESCRIPTION	WEIGHT
PSC4012730	Symmetrical Tension Puller w/ Ratchet Wrench	19.8 lbs (9.0 kg)
PSC4012796	24mm Ratchet Wrench w/ Universal Adapter	2.4 lbs (1.1 kg)

Hubbell has a policy of continuous product improvement. Please visit hubbellpowersystems.com to confirm current design specifications

SF_09_079_E