

SUPER TOP-TIE® LINE TIES



**POWER
SYSTEMS, INC.**

573-682-5521 Fax 573-682-8714 <http://www.hubbellpowersystems.com>

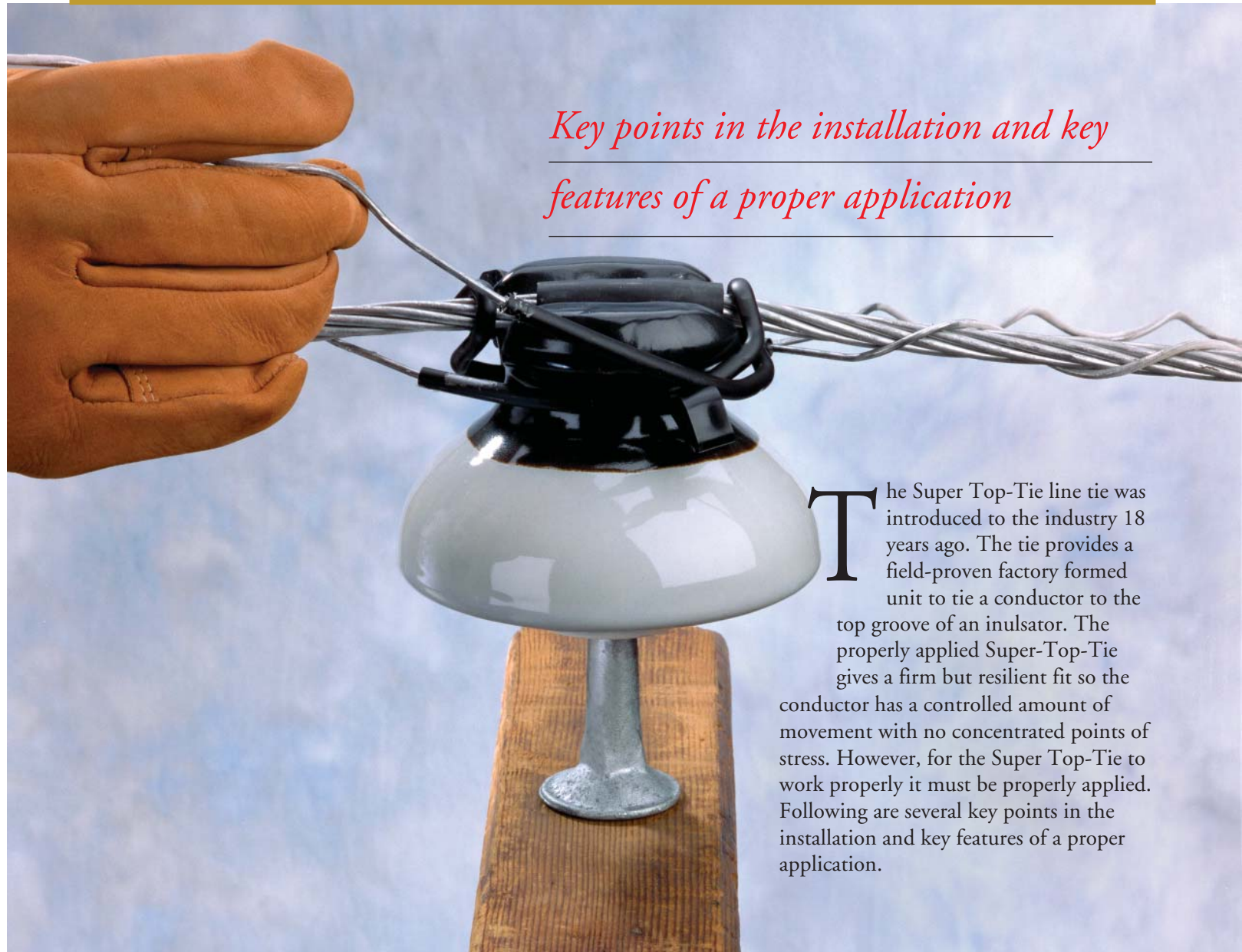
NOTE: Because Hubbell has a policy of continuous product improvement, we reserve the right to change design and specifications without notice.

©Copyright 2004 Hubbell • 210 North Allen Street • Centralia, MO 65240

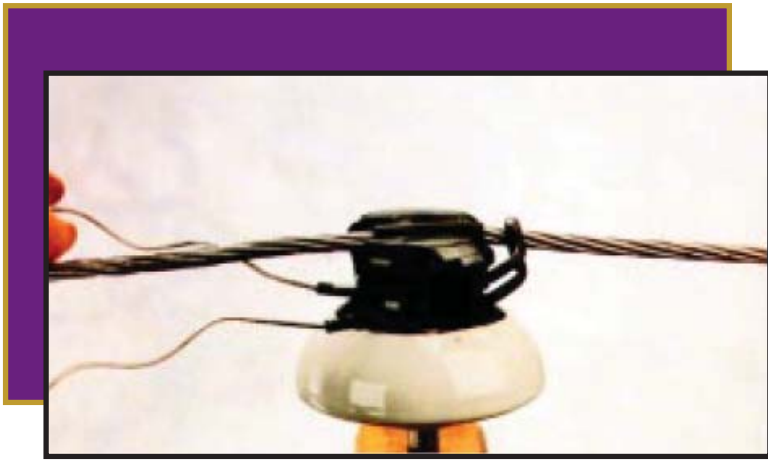
TIPS & NEWS
Reprinted from
Vol. 1, No. 5
NOVEMBER 1995

SUPER TOP-TIE[®] LINE TIES

*Key points in the installation and key
features of a proper application*

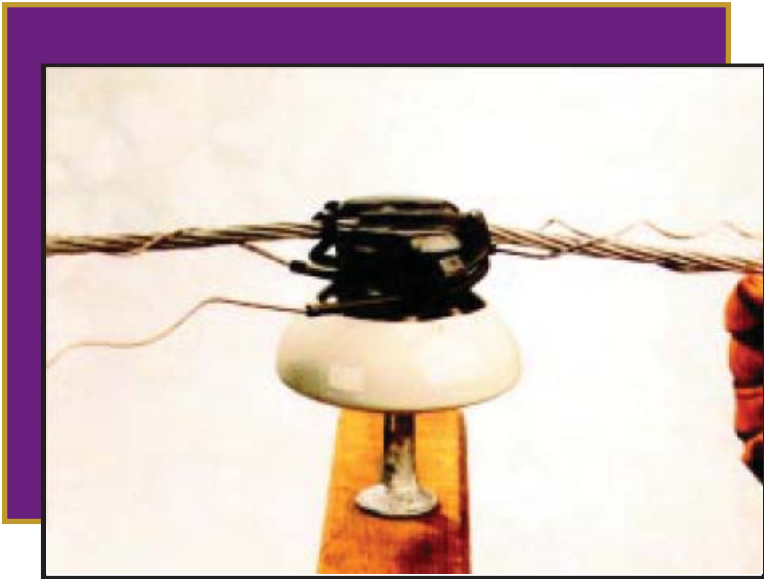


The Super Top-Tie line tie was introduced to the industry 18 years ago. The tie provides a field-proven factory formed unit to tie a conductor to the top groove of an insulator. The properly applied Super-Top-Tie gives a firm but resilient fit so the conductor has a controlled amount of movement with no concentrated points of stress. However, for the Super Top-Tie to work properly it must be properly applied. Following are several key points in the installation and key features of a proper application.



STEP 1

After placement of conductor pad, position first tie straddling conductor with hook leg up. Pull loop tightly against insulator and apply helical section of top leg only at this time.



STEP 2

Duplicate in opposite direction with the second tie wire. Again, apply only the top leg at this time.



STEP 3

Raise up unapplied leg and engage hook. Pull firmly against insulator and apply helical section. Hook should be closed and hold loop wires together as a unit. Note that hook must be against insulator to close.

CONTINUED, NEXT PAGE



STEP 4

Duplicate with second tie wire.

Be sure hook is closed and holds loop wires together as a unit. Figure 4 shows overall view of completed installation.



STEP 5

Inspection

A visual inspection of the completed tie should show the following:

1. Completely applied helical sections.
2. The tie loops pulled firmly against the insulator
3. The hooks holding the tie legs together as a unit as shown.

A Super Top-Tie line tie properly applied as shown gives years of proven service. ■



UNITED STATES
HUBBELL POWER SYSTEMS, INC.
210 N. Allen
Centralia, Mo 65240
Phone: 573-682-5521
Fax: 573-682-8714
e-mail: hpsliterature@hps.hubbell.com

CANADA
HUBBELL CANADA, INC.
870 Brock Road South
Pickering, Ontario L1W 1Z8
Phone: 905-839-1138
Fax: 905-831-6353
e-mail: infohps@hubbellonline.com

MEXICO
HUBBELL DE MEXICO, S.A. DE. CV
Av. Coyoacan No. 1051
Col. Del Valle
03100 Mexico, D.F.
Phone: 52-55-9151-9999
Fax: 52-55-9151-9988
e-mail: vtasdf@hubbell.com.mx

ASIA
HUBBELL S.E. ASIA PTE. LTD.
23 Tagore Lane #03-16
Tagore 23 Warehouse
Singapore 787601
Phone: 65-6454-4772
Fax: 65-6454-4775
e-mail: hpsliterature@hps.hubbell.com

Web: <http://www.hubbellpowersystems.com>

E-mail: hpsliterature@hps.hubbell.com

ANDERSON™ CHANCE® FARGO® HUBBELL® OHIO/BRASS®